

Extricom CloudBlanket™ NMS

WLAN Network Management System

CloudBlanket™ NMS is a comprehensive cloud-based system enabling the efficient management of Allied Telesis Extricom Series WLAN deployments from a single browser screen. Implementing the FCAPS (Fault, Configuration, Accounting, Performance and Security) model, CloudBlanket NMS connects with Extricom Series WLAN switches and access points to provide easy, standard-based administration, configuration and monitoring.



Overview

CloudBlanket NMS supports any deployment size—from small systems with a few WLAN switches, up to large-scale deployments with thousands of switches.

CloudBlanket NMS applies to any WLAN vertical including education, hospitality, hospitals, logistics, data centers and high-density large venues.

For customers who prefer to keep their own infrastructure, CloudBlanket NMS has an on-premise deployment mode, intended for localized installations on a private cloud server.

The Allied Telesis advantage

- ▶ Intuitive network management, configuration, monitoring and reporting.
- ▶ Scheduled network-wide operations on any network size.
- ▶ Real-time network health monitoring.
- ▶ User and group management.
- ▶ Secure and resilient performance.
- ▶ Ideal for Managed Services outsourcing.
- ▶ Reduced TCO for the Extricom Series solution.
- ▶ Public or private Cloud installation options.

Key Features

Network management

- ▶ CloudBlanket NMS enables efficient management of large WLAN networks using hierarchies for groups, sites and domains. Perform bulk operations on multiple entities, such as applying standard configurations; add the same ESSID to all switches or upgrade firmware.
- ▶ For more surgical operations, a topology view enables quickly identifying and drilling down to a specific device, to inspect and modify key configuration parameters.
- ▶ CloudBlanket NMS supports multiple admin levels, allowing any number of administrators to simultaneously manage one or multiple sites/domains via the cloud.

Monitoring and reporting

- ▶ A real-time dashboard provides a snapshot of the network performance. Focus on any performance parameter, such as the number of active WLAN clients. Aggregate traffic per AP, switch data or traffic per client. Various filters allow analysis of data such as ESSID, switch IP, wireless mode (802.11a/b/g/n/ac) or VLAN address.
- ▶ Polling rate statistics and graphical reports enable performance tracking of the entire system or individual segments and devices. All CloudBlanket NMS reports can be automatically generated, exported and e-mailed for management and auditing purposes.

Fault management

- ▶ The CloudBlanket NMS dashboard provides an instant view of the network performance, displaying essential data regarding the number and status of switches, access points, blankets and active radios.
- ▶ The Alarms and events display enables quickly identifying and zooming into the entity that triggered an alarm.

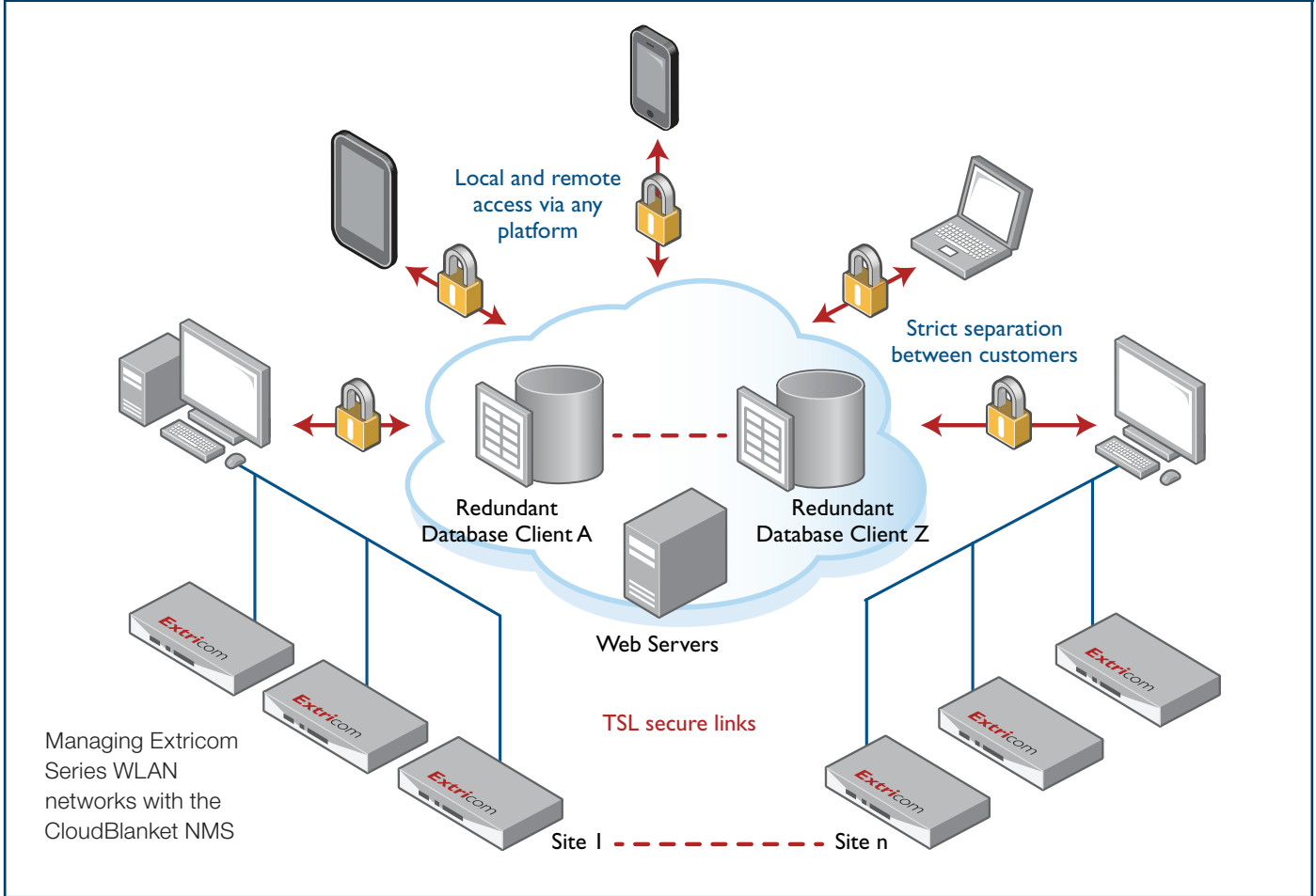
Security

- ▶ Secure network management is ensured, with a range of features including:
 - SSL-based client/server and server/switch sessions
 - encrypted user login authentication
 - separate redundant databases per site
 - location/site-specific user group privileges.
- ▶ In addition, all user-related data is encrypted within the database itself.

Deployment modes

- ▶ CloudBlanket NMS can be deployed in two modes:
 - Server running on a Cloud service
 - Server running local hardware

Key Solutions



Specifications

Architecture

- CloudBlanket NMS
 - Server running on a cloud service
- On-premise CloudBlanket NMS
 - Server running on local hardware, clients run Java-based web sessions remotely

Client

- Supported Operating Systems
 - Microsoft Windows 10/8.1/8/7/Vista
 - Linux 2.6 kernel and above
 - Sun Solaris 10
 - MAC-OS
 - Android 4 and above
 - iOS-7
- Supported Web Browsers
 - Chrome 32 and above
 - Firefox 26 and above
 - Safari

Microsoft Internet Explorer 9 and above
Opera

Security

- Access Control
 - Domain, Site and role-based access
- Authentication
 - Secure TLS management/control

Diagnostics

- Fault Management
 - Event and alarms display
 - Event selection in predefined list with severity selection
 - Visual, email alerts

Monitoring

- Dashboard
 - Gauges for site health, configurable client traffic and client count graphs
 - Client count and traffic
 - Configurable real-time client traffic and client count graphs

Topology View

Includes Domain and Site data connectivity

Inventory

Site switch list, on-line clients list

Reporting

- Historic
 - Client events log, vendor distribution, client count and traffic
- Scheduled
 - Scheduled reports setup

Configuration

- GUI cut-through
 - Switch and Access Point configuration and diagnostics
- Bulk Operations
 - Define operations and scope (firmware update, reboot, configuration, configuration update)

Ordering Information

AT-EXLC-CBNMS
CloudBlanket NMS license